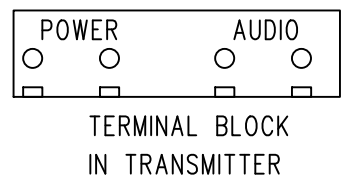
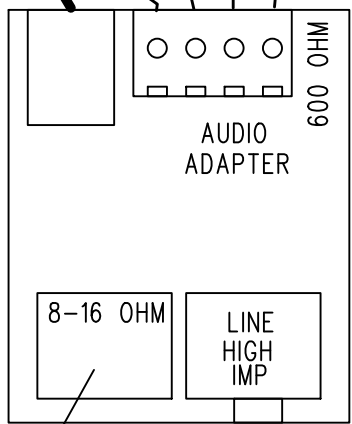


USE MIN #24 AWG FOR 50 FT OR LESS
 #22 AWG FOR 50-100 FT

600 OHM IMPED.
 CONNECT TO DEVICE
 WITH 600 OHM
 BALANCED OUTPUT
 OR USE SUPPLIED
 ADAPTER.

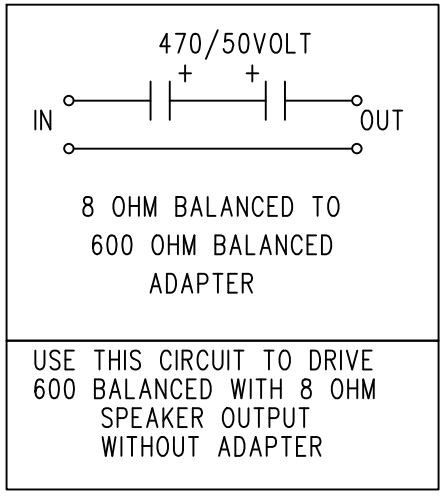
RED=POS
 BLACK=NEG

INSTALL FERRITE ON CABLE
 JUST OUTSIDE OF TRANSMITTER BOX



Set Switches 3&4 on to add 8 ohm load.
 Set either switch 1 or 2 on to short ground
 isolation resistor.

ANOTHER SUITABLE 14-18VDC SOURCE MAY BE USED



RANGEMASTER CABLE DIAGRAM