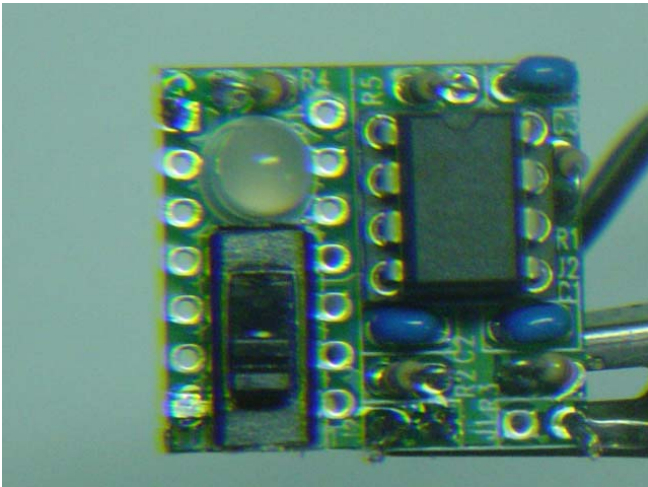


AM1000T Tuning Module

If your AM1000 is equipped with an AM1000T tuning module the multicolor LED will either blink green or turn solid green when your power level is at the FCC Part 15 legal 100 milliwatts. Be sure the switch is in the up position (towards the center of the module) to perform this function. In some situations you may get a mirror shorter green LED reading at a higher power level, if you get 2 readings the correct one is the one with the power control at the more counter clockwise position, the mirror reading will be much shorter and may not show up at all.

If the switch is down the module functions as a tuning aid, as the power amp voltage goes up the LED will get greener. If you find that the LED gets suddenly red then you are going out of its range, turn the power pot on the transmitter down some.



To install the AM1000T yourself you may need to solder connectors and wires, do not do this if you don't feel competent. Place the AM1000T as shown into the 14 pin pattern on the main AM1000 printed circuit board. Solder the 14 pins on the bottom of the AM1000 board. The Solder the 2 sense wires as shown. The left wire goes to the bottom pad of C18 and the right wire goes to the top pad of C35. The AM1000T should then function as above. If it doesn't check the sense wire connections.

Note that the newer units (after 01/06) don't need the sense wires, the connection is made internally.

